



50 Bartlett Crescent HOPPERS CROSSING VIC

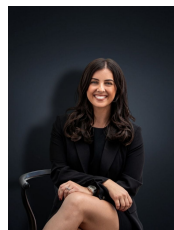
4 2 2

Nestled in the highly sought after Mossfiel Estate, this well loved family home sits on approximately 592sq m only a short drive to Pacific Werribee (1.6km), Hogans Corner Shopping Centre (1.0km), Hoppers Crossing Secondary (1.6km) and Hoppers Crossing Train Station (2.9km).

The home offers an open floor plan creating a generous space for any family in a great location with nearby parklands, gyms and reputable schools. The home offers;

Land Size : 592 sqm
View : <https://www.ypa.com.au/7361350>

- Four spacious bedrooms
- Master with ensuite and walk in robe
- Open kitchen/meals arrangement
- Family living area
- Separate dining/study
- Ducted heating & evaporative cooling
- Ceiling fans



Kirsty Cunningham
 0414 344 475