



## 2B Tillbush Close HOPPERS CROSSING VIC

3  2  1 

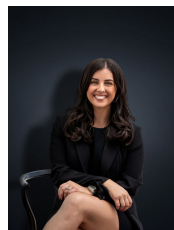
Nestled in a quiet and well established pocket of Hoppers Crossing, this contemporary and stylish townhouse sits only a short drive to Hogans Corner Shopping Centre (1.6km), Wyndham Village Shopping Centre (2.1km), Hoppers Crossing Station (2.9km), Pacific Werribee (3.0km) & reputable schools including St. James the Apostle.

The home offers an open plan design creating a generous space for any family or investor in an exclusive location surrounded by parklands, bike and walking tracks and local shops. The home offering a low maintenance lifestyle offers:

- Master bedroom with ensuite and walk in robe
- Two remaining spacious bedrooms with built in robes
- Study upon entry
- Open plan kitchen/Meals and family living arrangement

**Land Size** : 237 sqm

**View** : <https://www.ypa.com.au/7361365>



**Kirsty Cunningham**  
0414 344 475