



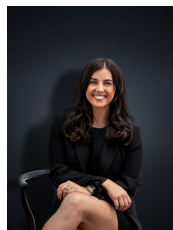
168 Greaves Street North WERRIBEE VIC

3 1 2

Nestled in one of Werribees most desirable locations, this well-established home sits on approximately 611sq m and is situated only a short drive to Werribee CBD with restaurants, cafes, Werribee train station and shops (2.5km).

A short 3-minute drive (1.4km) to Eagle stadium and a short walk to Werribee River Parklands & Walking tracks. With reputable schools within walking distance as well this is a great position for any family to be in. With a low maintenance layout and plenty of potential to renovate & make this your dream home the home offers;

Building Size : 16 sqm
View : <https://www.ypa.com.au/7361369>



Kirsty Cunningham
0414 344 475

- Three bedrooms
- Central bathroom
- Multiple living zones
- Open kitchen/meals area
- Covered outdoor entertaining area