



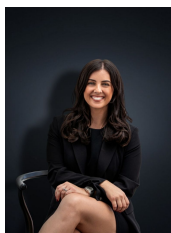
35 Weavers Street MANOR LAKES VIC

4 2 2

This wonderfully refreshing single storey home combines spacious living proportions and an open, easy care layout. Situated in a thriving part of Manor Lakes the property sits on approximately 448 sq m.

Building Size : 18 sqm
Land Size : 448 sqm
View : <https://www.ypa.com.au/7361383>

Located only 5 minutes drive to Manor Lakes shopping centre (2.7km), Wyndham Vale Train Station (1.4km), reputable schools, parklands, walking tracks and many amenities this home is perfect for those who are seeking accessibility and convenience. With loads of potential this family residence is move in ready. The home offers;



Kirsty Cunningham
0414 344 475

- Four bedrooms
- Master bedroom with WIR and ensuite
- Remaining bedrooms with BIRs
- Formal lounge upon entry
- Massive open plan European style kitchen/meals and family living area