



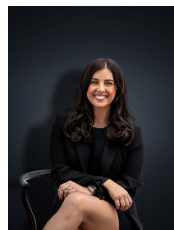
## 14/219 Watton Street WERRIBEE VIC

2 1 1

Situated in the thriving Werribee CBD precinct, only a short distance to Werribee Train Station (1.1km) and a short 2 minute walk to Werribee CBD Shops, Cafes, Restaurants & Amenities. Located across the street from Werribee Outdoor Pool and Chirnside Reserve this property is situated in one of the most central pockets of Werribee. The spacious apartment is perfect for those looking for their first home, downsizing or expanding an investment portfolio. The home offers:

- Two spacious bedrooms with built in robes
- Open plan living/dining arrangement
- Central bathroom
- Kitchen features stainless steel appliances and stone bench tops
- Balcony overlooking Chirnside Reserve & Park
- Downlights throughout
- Reverse cycle heating and cooling

**Building Size** : 8 sqm  
**View** : <https://www.ypa.com.au/7361384>



**Kirsty Cunningham**  
 0414 344 475