



58 Tyler Crescent TARNEIT VIC

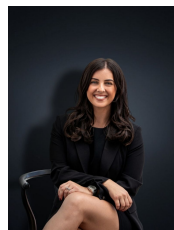
4 2 2

Located in the ever-growing suburb of Tarneit, this open plan and contemporary residence is a home that was created to meet every current day need with a beautiful balance of quality and style. This home presents a great opportunity to suit first home buyers, downsizers and investors looking for a low maintenance home within close proximity to Tarneit Gardens Shopping Centre & Cafes (2.7km), newly constructed Riverdale Shopping & Town Centre (1.3km).

Surrounded by beautiful parklands, walking tracks, rivers and local amenities including reputable schools and local transport, this home is perfect for those who are seeking convenience and accessibility.

The home offers:
Four bedrooms
Master with WIR and ensuite

Land Size : 446 sqm
View : <https://www.ypa.com.au/7361385>



Kirsty Cunningham
0414 344 475