



54 Parramatta Road WERRIBEE VIC

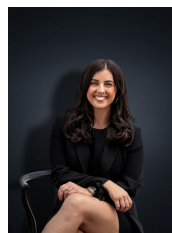
3  1  2 

This well loved family home combines a pristine and established location in the popular Riverdene Estate, perfect for investors and those looking to for their first home. Sitting on a corner position of approximately 590sq m this home is placed in a central pocket surrounded by bus stops, local shops, medical centres and parklands making it the perfect home for those looking to make the most of the easily accessible amenities of the Estate.

The property sits within 1.9km of Wyndham Central College, Galvin Park Reserve (2.2km), Pacific Werribee Shopping Centre (3.0km) and Werribee CBD Shops & Train Station, Restaurants and Cafes this property has all the bells & whistles that you could ask for including;

- Three bedrooms with built in robes
- Central bathroom
- Formal lounge upon entry

Building Size : 14 sqm
Land Size : 590 sqm
View : <https://www.ypa.com.au/7361400>



Kirsty Cunningham
0414 344 475