

21 Leichardt Drive MANOR LAKES VIC

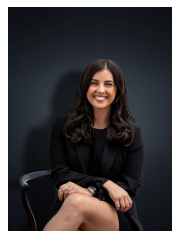
4 2 2

Surrounded by parklands, bike and walk tracks, this Metricon built home sits undeniably in one of the best locations Manor Lakes has to offer. The family home offers kindergartens and schools in every direction, council community centre, cafes, restaurants, local medical facilities, gyms and retail outlets to offer ample shopping opportunities!

Located only a 5 minute drive to Wyndham Vale Train Station (3.6km), Manor Lakes Shopping Centre (3.9km), Wyndham Vale Shopping Centre (2.8km) and a 10 minute drive to Werribee CBD Shopping, Restaurants & Train Station (7.0km). This home will accommodate all your family needs whilst offering the best in quality and design.

The home itself offers:
Four bedrooms

Building Size : 19 sqm
Land Size : 576 sqm
View : <https://www.ypa.com.au/7361410>



Kirsty Cunningham
0414 344 475