



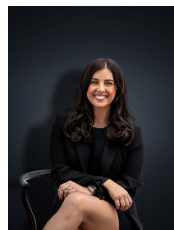
## 20 Rudolph Street HOPPERS CROSSING VIC

3 2 2

Nestled in a quiet pocket of the highly sought after Mossfiel Estate is this well loved family home with a unique and bold street presence is now presented to the market for the very first time. Surrounded by parklands, bike and walking tracks this home offers established and new local amenities, offering a rare opportunity for first home buyers and investors alike looking for a home in a well-positioned and central pocket.

Located a mere 850m walk to Hoppers Crossing Secondary and a short drive to St Peters Primary School (1.3km) this home provides reputable schools in every direction. With Pacific Werribee Shopping Centre only 2.3km away and local transport and shops in abundance this home is perfect for those looking for ease of accessibility.

**Land Size** : 568 sqm  
**View** : <https://www.ypa.com.au/7361411>



**Kirsty Cunningham**  
**0414 344 475**