



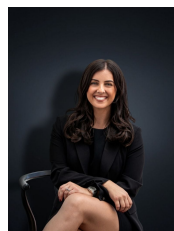
## 19 Woolpack Street HOPPERS CROSSING VIC

3 2 2

Exceptionally located in Central Hoppers Crossing this wonderfully maintained family home sits you within minutes to everything that Hoppers Crossing has to offer. Within 1.5km you will reach Pacific Werribee Shopping centre, approx. 4.3km to either Hoppers Crossing or Werribee Train stations, Walking distance to parklands, reputable schools, local shops & only a short drive to freeway access. The location evidently ticks all the boxes & the house itself situated on approximately 582 sq m offers;

**Building Size** : 26 sqm  
**Land Size** : 582 sqm  
**View** : <https://www.ypa.com.au/7361419>

- Three bedrooms
- Master bedroom with walk in robe and ensuite
- Remaining bedrooms with built in robes
- Central bathroom
- Kitchen with stainless steel appliances and island bench
- Massive Meals and separate living area
- Formal lounge upon entry
- Large covered outdoor entertaining area



**Kirsty Cunningham**  
**0414 344 475**