

## 32 Westleigh Drive WERRIBEE VIC

5 2 3

Excellently nestled amongst the highly sought after Westleigh Gardens Estate, this home boasts elegance, quality and design where it matters most! With a bold street presence, sprawling over 36 squares of living (approx.) and a massive 1140sq m block (approx.) this home is sure to impress the growing family.

Situated only a short distance to Werribee CBD Shops, Restaurants, Cafes and Werribee Train Station; and with reputable schools in every direction, stunning walk and bike tracks, bus stops and easy access to the Princes Freeway, this home is perfect for those looking to make the most of the easily accessible amenities the estate has to offer.

The home itself offers:

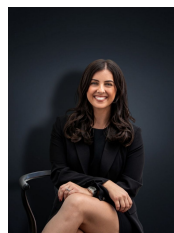
Five bedrooms

Master bedroom with walk in robe and ensuite

**Building Size** : 36 sqm

**Land Size** : 1140 sqm

**View** : <https://www.ypa.com.au/7361420>



**Kirsty Cunningham**  
0414 344 475