



1/8 Carmarthen Close WERRIBEE VIC

2  2  1 

Situated in a quiet court location this neat and tidy home offers a versatile floor plan for first home buyers, investors, downsizers and those looking for a low maintenance lifestyle.

Placed in close proximity to Werribee Racecourse (1.0km), Reputable schools such as Thomas Chirside Primary School (750m) & Iramoo Primary School (2.0km), Eagle Stadium Gym and Recreational Centre (3.1km) and Werribee CBD Shops, Cafes and Restaurants (3.5km). This home is perfect for those looking for ease of accessibility in a central location.

The home itself offers:

Two bedrooms

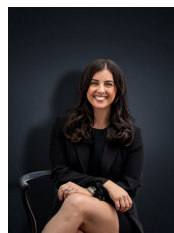
Master with walk in robe and ensuite

Central bathroom

Building Size : 8 sqm

Land Size : 182 sqm

View : <https://www.ypa.com.au/7361421>



Kirsty Cunningham

0414 344 475