



14 Elmes Court HOPPERS CROSSING VIC

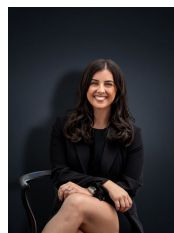
3 2 4

This well maintained home has had no effort spared, nestled in a quiet pocket of the highly sought after Cambridge Estate on a massive 847sq m block (approx.). The well loved family home offers nothing but the best in quality and design in a centralised location.

Within a short walk (950m) you will reach the recently refurbished Pacific Werribee Shopping Centre, Parks, Bike tracks and only a short drive to reputable schools such as Cambridge Primary School (1.3km) and Heathdale Christian College (1.6km) as well as Hoppers Crossing Train Station (3.2km). This home offers a rare opportunity for those looking for a family home in a convenient location.

The home itself offers:
Three Bedrooms
Master bedroom with walk in robe and recently renovated

Building Size : 18 sqm
Land Size : 847 sqm
View : <https://www.ypa.com.au/7361428>



Kirsty Cunningham
0414 344 475