

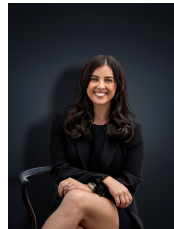
## 520/ Stage 5 Woods Road TRUGANINA VIC

This flexible block is situated on a corner site of approximately 330 sq m is simply perfect for that family home to be built. Located in Truganina this up and coming community is situated only 21km away from the Melbourne CBD and provides very easy freeway access. With future developments including a primary school and shopping Centre everything is within easy reach for you. Only a short distance to the Pacific Werribee Shopping Centre, Westbourne Grammar School and Tarneit Train station living here will make your life a breeze! Make no mistake, call and own this land today!

(PHOTO ID REQUIRED AT OPEN FOR INSPECTION)

At YPA Estate Agents 'our service will move you'

**View :** <https://www.ypa.com.au/7361544>



**Kirsty Cunningham**  
0414 344 475