

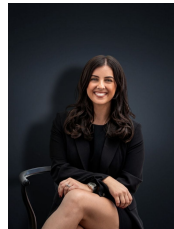
1149/ Tindale Boulevard WERRIBEE VIC

Located in this booming estate of Werribee you are within close proximity to Werribee CBD & Railway Station (Approx. 3.5km), Freeway access to reach Melbourne CBD within 38km and so many more of Werribees greatest attractions including Werribee Park & Open Range Zoo, Mansion Hotel & Spa and Pacific Werribee Shopping centre.

With a master plan already on its way there is no better estate to build your future in. Offering a generous corner allotment of approximately 416 sq m this land is due to title mid 2019! Dont miss this dream opportunity to build your future, enquire TODAY!

(PHOTO ID REQUIRED AT OPEN FOR INSPECTION)

View : <https://www.ypa.com.au/7361621>



Kirsty Cunningham
0414 344 475

'At YPA Estate Agents, our service will move you'