



3/35-37 Bartlett Crescent HOPPERS CROSSING VIC

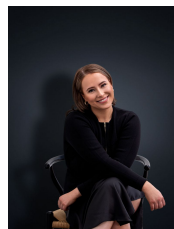
2 1 1

Located within walking distance to Hogans Corner Shopping Centre and only a short drive from the Werribee Plaza is this perfectly positioned unit. Comprising of two bedrooms, master with walk in robe, secondary bedroom with built in robe, central bathroom, separate formal lounge with gas wall heater, spacious kitchen with plenty of cupboard space, along with a light filled meals area, which leads out to the stunning established gardens. Extra features include floating floorboards to lounge, split system air conditioner, single garage and a gazebo in the backyard for you to sit back, relax and enjoy the serenity.

(PHOTO ID REQUIRED AT OPEN FOR INSPECTION)

At YPA Estate Agents 'our service will move you'

View : <https://www.ypa.com.au/7362464>



Ali Dowling
0450 778 972