



2/10 Chapman Drive WYNDHAM VALE VIC

3  1  2 

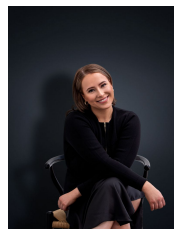
This private, rear unit offers space and luxury! Located within close proximity to schools, walking trails and Werribees favourite family spot; Presidents Park - Which is a fantastic adventure playground fit for the whole family.

View : <https://www.ypa.com.au/7362519>

Property features include:

- Three generous sized bedrooms, all with fitted built in robes
- Central bathroom
- European laundry
- Large tiled, open plan living
- Double lock up garage, on remote

Extra features include; Upgraded stainless-steel cooking appliances, dishwasher, glass splashback, ceaser stone benchtop, ducted heating, split system, security alarm &



Ali Dowling
0450 778 972