

24 Swallow Street WERRIBEE VIC

3  1  1 

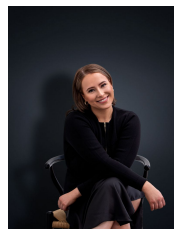
This immaculate three-bedroom family home is nestled in the heart of growing Werribee and is just moments away from Pacific Werribee Shopping Centre, Aquapulse, Wyndham Park Community Centre, parklands, shops, schools and much more.

Property features include:

- Three bedrooms, two of which are fitted with built in robes
- Separate & spacious L-shaped lounge room
- Central bathroom with 2-way access
- Living/ Dining space with gorgeous cathedral ceilings
- Outside offers carport with front and rear roller doors and ample driveway car parking

Extra features: Ducted heating, a cooling unit, garden shed, covered pergola, gas hotplates, internal laundry and much more

View : <https://www.ypa.com.au/7362537>



Ali Dowling
0450 778 972