



10 Kondalilla Drive TRUGANINA VIC

4 2 2

This beautifully presented family home does not compromise on space and style. Located in a well-established area nearby to the Tarneit train station, freeway access, local shops, reputable schools and beautiful walking tracks this home is an ideal family abode

Property features include:

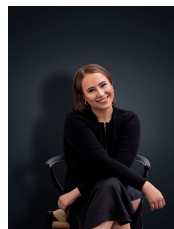
Large master bedroom with expansive fitted walk in robe and full spa en-suite with double vanity, double shower and separate toilet

Three remaining large bedrooms (all with BIRs) including a guest bedroom with access to the two-way central bathroom

Three separate living zones including formal lounge, rumpus and an open plan kitchen/meals and family arrangement

Enclosed alfresco great for entertaining guests

View : <https://www.ypa.com.au/7362544>



Ali Dowling
0450 778 972