



**26 Milton Drive WYNDHAM VALE VIC**

4 2 1

You will feel right at home the minute you step in front of this one, located on a quiet street is this beautiful country style four-bedroom family home. This has all you could need to make the entire family comfortable. This property is near all amenities including primary schools, parks, shops and public transport.

Property features include:

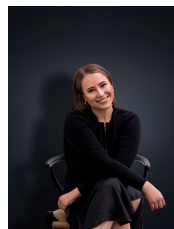
Four large bedroom, master bedroom with en-suite  
Enjoy the winter nights in the lovely step down lounge with feature wood Conara

Separate dining room, central kitchen with separate spacious tiled family area

Easy to maintain backyard which includes two entertaining areas

Oversized single garage with rear working area and mezzanine storage

**View** : <https://www.ypa.com.au/7362571>



**Ali Dowling**  
**0450 778 972**