



8 Nova Avenue TRUGANINA VIC

3 2 2

Introducing this endearing single storey residence, in the highly sought-after Gateway Estate of Truganina, providing a boutique location! Gateway offers unprecedented access to the freeway via Palmers Road overpass, connecting you directly to the heart of Melbourne. The availability of modern amenities, along with the convenience of an abundance of established recreation/community facilities, shopping, schools, services & numerous transport options. Creating an enviable living environment in a fantastic location!

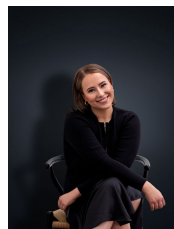
Property features include:

Three bedrooms fitted with built in robes, master boasting a lovely en suite & walk in robe

Two separate open-plan living areas, great for entertaining!

Modern central bathroom

View : <https://www.ypa.com.au/7362605>



Ali Dowling
0450 778 972