



148 Eureka Drive WYNDHAM VALE VIC

4 2 2

This spacious family home ticks all the boxes, situated close to primary and secondary schools, public transport and the Manor Lakes Shopping Centre, this home is centrally located for your everyday needs.

Property features include:

Four spacious bedrooms, master with large walk in robe and en-suite with double vanity

Formal living upon entry

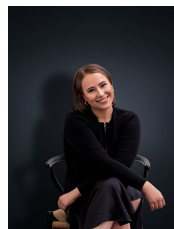
Kitchen is fitted with plenty of cupboard/bench space and a huge walk-in pantry

Open plan dining and living area which opens to a very spacious undercover alfresco area

Oversized double remote garage with rear roller door drive-through access

Extra features: ducted heating, two (2) air-con cooling units, crimsafe style security door to the front door, linen

View : <https://www.ypa.com.au/7362613>



Ali Dowling
0450 778 972