



1 Mersey Court WERRIBEE VIC

3 1 1

Carefully structured, this centrally located three-bedroom home is sure to impress! Nestled away in a gorgeous court location, with convenience at your doorstep! Within close-proximity to Werribee Train Station & the Werribee CBD.

Property features:

Three good sized bedrooms, alongside a central two-way bathroom

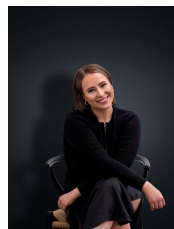
Separate toilet & laundry, in which provides rear access

Large free-flowing floorplan, accompanied by a large entry way & intimate lounge

Kitchen/meals area, lead out to an undercover entertaining zone & low maintenance yard

Property upgrades include; Split system heating & cooling, warm central fireplace, ceiling fans, security screen doors, garden shed, single garage/carport... All within a gorgeous corner block, perfect for a family of every size.

View : <https://www.ypa.com.au/7362619>



Ali Dowling
0450 778 972