



## 42 Callander Crescent HOPPERS CROSSING VIC

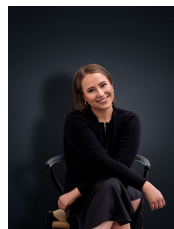
2 1 1

If location, along with a low maintenance lifestyle is what you are looking for Then this property is for you! Situated in a quiet setting, within easy reach to the well renowned Pacific Werribee Shopping Centre, Hoppers Crossing train station, quality schools/childcare facilities and easy freeway access.

Property features include:

- Two carpeted bedrooms, fitted with built in wardrobes
  - Central up-to-date bathroom, inclusive of toilet, bath & shower
  - Contemporary light-filled kitchen, decked with stainless steel appliances
  - Free-flowing floorplan, alongside an open-plan living zone leading to private backyard
  - Single lock up garage on remote control, providing internal access
- Property upgrades include; Ample cupboard & bench

View : <https://www.ypa.com.au/7362624>



**Ali Dowling**  
0450 778 972