



4 St Nicholas Drive TARNEIT VIC

4 2 2

A stunning contemporary designed home providing high end features in one of Tarneits most exclusive pockets, the St. James Wood Estate, overlooking Skeleton creek and beautiful walking tracks, the property will give its next tenant the desired fairy-tale ending theyve been waiting for. Located within very close proximity to Al-Taqwa College, Westbourne Grammar, Wyndham Village Shopping Centre, Freeway access, only 6 minutes to Tarneit Railway Station and 10 minutes to Pacific Werribee.

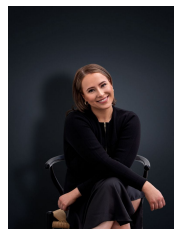
Property feature include:

Four spacious bedrooms (with fitted built in robes), Master bedroom with walk in robe and en suite

Formal lounge upon entry and rumpus/second living at the back of the home

Hostess kitchen overlooking the massive dining area with bi-fold doors opening out to the large entertaining space

View : <https://www.ypa.com.au/7362664>



Ali Dowling
0450 778 972