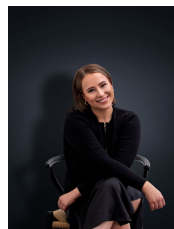


## 27 Strathmore Crescent HOPPERS CROSSING VIC

6 2 2

Welcome to this total family sized lifestyle package! With location and size, this home has something for the whole family!! Situated within the heart of the Woodville Estate, you have Pacific Werribee, Woodville and Hoppers Crossing Shopping Centres all close by, while schools, medical centres, parks, simple freeway access and the Hoppers Crossing train station are also all close at hand. Any large family will appreciate this genuine six bedroom home with the master offering ensuite and a walk in robe. Comprising formal living and dining rooms, there is also an upstairs family or games room. A renovated kitchen overlooks the separate meals room while also featuring stainless appliances and dishwasher. Air conditioning and ducted heating keep the climate comfortable while an outdoor elevated covered deck is ideal for entertaining. Large backyard for the kids, there is also a double garage and remote roller door side access to the additional double

**View :** <https://www.ypa.com.au/7362672>



**Ali Dowling**  
**0450 778 972**