



2/9 Barrot Avenue HOPPERS CROSSING VIC

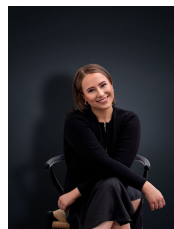
3  2  1 

This home is situated in Central Mossfiel Estate, in the absolute heart of Hoppers Crossing and only a stones throw from Pacific Werribee, Hoppers Club, Local Schools and Train Station. The home offers three bedrooms, master bedroom with oversized ensuite, central bathroom, open plan kitchen/meals/living and walk in pantry. Other features include: alarm system, ducted heating & cooling, single garage with remote control, internal access, low maintenance grounds and gardens.

(PHOTO ID REQUIRED AT OPEN FOR INSPECTION)

At YPA Estate Agents 'our service will move you'

View : <https://www.ypa.com.au/7362684>



Ali Dowling
0450 778 972