

13 Waratah Road WERRIBEE VIC

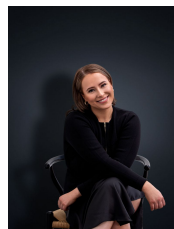
4 2 2

This very spacious, four-bedroom family home comprises of two separate large living areas, master bedroom with spacious walk in robe and ensuite with twin basins, double built in robes in all other three bedrooms, central bathroom, internal laundry, and a large open plan kitchen with modern cooking appliances and ample cupboard space. Extra features include ducted heating throughout, generous sized yard, double lock up garage.

(PHOTO ID REQUIRED AT OPEN FOR INSPECTION)

At YPA Estate Agents 'our service will move you'

View : <https://www.ypa.com.au/7362690>



Ali Dowling
0450 778 972