



17 Bartlett Crescent HOPPERS CROSSING VIC

3 2 2

Set amongst established surroundings, a short distance to the Pacific Werribee Plaza & close to schools and public transport, this is the perfect family home.

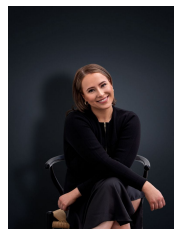
The home has a spacious lounge room at the front of the home, a large rumpus as the rear, a central bathroom, a neat kitchen and an adjoining family meals area.

Property features include:

- 3 fitted bedrooms, all with built in robes
- Main bedroom complete with walk in robe, ensuite & corner spa bath
- Double carport with drive through access
- Large covered outdoor entertaining space
- Free standing cubby house

Extra features: large full powered garage, gas ducted heating, ducted evaporative cooling

View : <https://www.ypa.com.au/7362707>



Ali Dowling
0450 778 972