

47 Morgan Crescent WERRIBEE VIC

3 2 2

This enticing three-bedroom home includes ample natural light and loads of space! Located with very easy access straight on to the freeway and just a short drive to werribee CBD, this home wont last long!

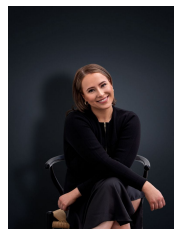
Property features include:

- Master bedroom offers walk in robe and en-suite
- Large open plan tiled kitchen, dining and living room
- Central main bathroom and separate laundry
- Double lock up garage on remote

Extra features: bedrooms two and three are fitted with built in robe, modern cooking appliances, dishwasher, ducted heating, two split system cooling units, very low maintenance court yard and much more.

NOTE: This property is available for 6 months only

View : <https://www.ypa.com.au/7362709>



Ali Dowling
0450 778 972