

10A Pioneer Court WERRIBEE VIC

3 1 2

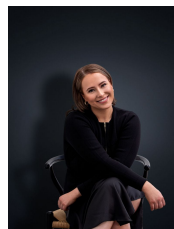
This neatly presented unit has a lot to offer and is conveniently located within walking distance to shops and medical centre, bus stop and a short drive to schools, Pacific Werribee, Aqua Pulse and other amenities.

Property features include:

- Three spacious and sunny bedrooms all fitted with built in robes
- Spacious lounge upon entry
- Open plan kitchen and meals area
- Central main bathroom
- Covered and uncovered car space

Extra features: gas wall heater, stainless steel appliances, gas stove top cooking, ceiling fan, undercover area outside and much more

View : <https://www.ypa.com.au/7362711>



Ali Dowling
0450 778 972