



## 14 Blackforest Road WERRIBEE VIC

4  2  2 

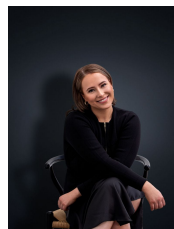
This recently renovated family home delivers both warmth and charm from the minute you enter. Situated in the most sought after pockets of the Thomas Chirside primary school, giving you the school zone that any family would appreciate, the property is also close to local shops, walking tracks and parklands.

### Property features include:

- Four bedrooms, master bedroom with en-suite
- Large lounge upon entry with beautiful natural light and new floorboards
- Separate dining area incorporating a spacious kitchen
- Central main bathroom
- Pergola area overlooking a well establish rear year including garden shed for additional storage

Extra features: Stainless steel appliances including new

**View** : <https://www.ypa.com.au/7362716>



**Ali Dowling**  
0450 778 972