



17 Evans Way WERRIBEE VIC

4  2  2 

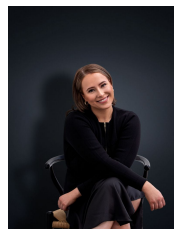
This appealing Ranch style residence will impress at every turn, located amongst fine homes this property is close to all amenities including freeway access, schools, shops and parks.

Property features include:

- Four bedrooms (master with en-suite and large walk in robe)
- Large separate lounge room and formal dining zone
- Well equipped kitchen with stainless steel appliances and dishwasher
- Central main bathroom and separate laundry
- A pleasant low maintenance garden with pergola

Extra features: gas ducted heating, two split type cooling units, double car accommodation with remote control, drive through access from garage, fruit trees and much more.

View : <https://www.ypa.com.au/7362717>



Ali Dowling
0450 778 972