



3/2A Queens Court WERRIBEE VIC

3 2 2

Conveniently positioned, only a few minutes walking distance from Werribee train station! This modern two storey townhouse is also within close proximity to Werribee CBD, alongside all its amenities. Offering easy freeway access to either Melbourne's CBD and/or surf coast.

View : <https://www.ypa.com.au/7362726>

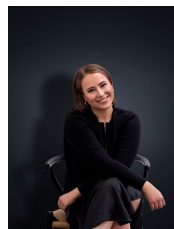
Property Features:

Three generous size bedrooms, master fitted with ensuite, walk in robe & balcony. Remaining bedrooms tailored with built in robes

Spacious carpeted lounge room, light-filled kitchen with adjoining meals zone, overlooking low-maintenance outdoor entertaining

Central main bathroom upstairs, in addition to a powder room downstairs

Separate laundry, offering access to double



Ali Dowling
0450 778 972