

13 Orchid Court HOPPERS CROSSING VIC

3 2 2

Perfectly positioned, offering privacy and comfort! This immaculately presented single-level home radiates a wonderful sense of warmth and charm. Located in the heart of Hoppers Crossing, in the sought-after Bellbridge Estate. Within walking distance to Bellbridge Primary school, Skeleton Creek, bike trails/gorgeous walking tracks and the public transport network.

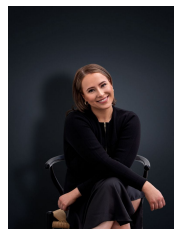
Property Features:

Three well sized bedrooms fitted with built in robes, master offering large walk in robe

Central bathroom & separate ensuite, tailored with an extra-large shower

Separate/spacious lounge room, light-filled rumpus room &

View : <https://www.ypa.com.au/7362727>



Ali Dowling
0450 778 972