



## 4 The Court HOPPERS CROSSING VIC

2 1 1

This updated residence is offering a low maintenance lifestyle with some great features. With its very desirable Cambridge address, it is situated in the heart of Hoppers Crossing. Cambridge Primary School, Heathdale College, Pacific Werribee and Hogans Corner Shopping Centres, Public Transport, Parklands and Medical Services to name only a few are all extremely close at hand there is seriously no need to even own a car!

Property features include:

- Two generous bedrooms offer plenty of robe space

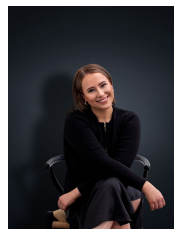
- Formal lounge upon entry

- Central kitchen with ample cabinetry and an adjoining meals room

- Main bathroom entailing private access to the master bedroom

- Pergola with timber decking

**View :** <https://www.ypa.com.au/7362728>



**Ali Dowling**  
**0450 778 972**