



**2/81 Princes Highway WERRIBEE VIC**

**3**  **1**  **1** 

This low maintenance home is situated in a great location with freeway access at your door step! This home is within close proximity to Werribee CBD and Werribee Train Station.

Property features include:

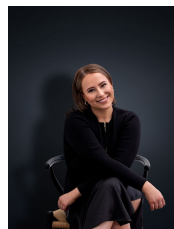
- 3 spacious bedrooms, master with WIR
- Central two way bathroom
- Open plan dining & living
- Private paved courtyard
- Garage with internal access

Extra features: dishwasher, ducted heating

(PHOTO ID REQUIRED AT OPEN FOR INSPECTION)

At YPA Estate Agents 'our service will move you'

**View** : <https://www.ypa.com.au/7362731>



**Ali Dowling**  
**0450 778 972**