



2/10 Chapman Drive WYNDHAM VALE VIC

3 1 2

This private, rear unit offers space and luxury! Moments from Manor Lakes shopping precinct, within close proximity to Werribees favourite playground - Presidents Park. Dressed in contemporary flare, this three-bedroom home is away from Werribee/Wyndham Vales hustle and bustle; Whilst nearby local amenities and the public transport network.

Property Features:

Three generously sized bedrooms accompanied with double built in robes

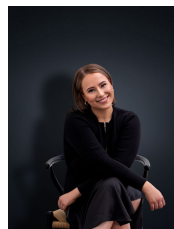
Central bathroom, European laundry

Modern kitchen fitted with quality appliances, overlooking large open-plan living zone

Double lock up garage on remote

Additional features include; Stainless-steel cooking appliances, dishwasher, ceaser stone benchtop, ducted heating, split system cooling, security alarm, flyscreens and

View : <https://www.ypa.com.au/7362734>



Ali Dowling
0450 778 972