



## 1/6 Montana Drive WERRIBEE VIC

3 2 1

This cozy three-bedroom home offers fitted built in robes in all three rooms, two central bathrooms, stainless steel cooking appliances and LG dishwasher, intimate lounge area and separate dining.

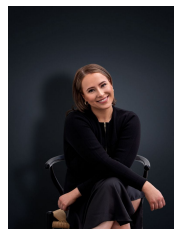
Outside offers garden space with undercover verandah area and separate courtyard area for entertaining all year round. Single lock up garage with roller door with internal access.

This home is close to schools, shops and public transport and is sure to please the whole family.

(PHOTO ID REQUIRED AT OPEN FOR INSPECTION)

At YPA Estate Agents 'our service will move you'

**View :** <https://www.ypa.com.au/7362742>



**Ali Dowling**  
**0450 778 972**