



## 5 Bexley Close WERRIBEE VIC

4 2 2

Here we have this large family home which offers an abundance of space for the entire family to be comfortable. Located in the heart of Werribee you are close to local shops, public transport, Presidents Park, Eagle Stadium and Manorvale Primary School.

### Property features include:

Four generously sized bedrooms, master featuring a walk in robe and en-suite

The kitchen offers an abundance of bench and cupboard space adjacent to the open plan living and meals area

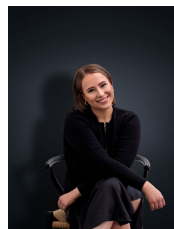
Secondary living and formal dining/sitting area upon entry

Updated central bathroom with separate toilet and laundry

Large pergola for all year round outdoor entertaining and a very generous yard for the kids to play in

Extra features: double lock up carport, split system heating

**View :** <https://www.ypa.com.au/7362758>



**Ali Dowling**  
0450 778 972