



50 Tundra Esplanade WERRIBEE VIC

4 2 2

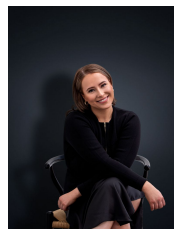
This stunning residence embraces a contemporary feel with a succession of light filled living spaces. With quality fixtures and fittings throughout and a great street presence, this home situated in most demanded area of Werribee, Harpley Estate. Conveniently set close to public transport, shopping centre and schools.

Property features include:

- Four bedrooms, main bedroom includes walk in robe and en-suite
- Spacious formal living area upon entry
- Open plan living/ meals area incorporating a superb kitchen
- Central main bathroom with separate toilet and laundry
- Double car garage and great sized yard

Extra features: ducted heating, split type cooling, ample

View : <https://www.ypa.com.au/7362789>



Ali Dowling
0450 778 972