



## 50 Chapman Drive WYNDHAM VALE VIC

3 2 1

This cosy home offers space & luxury! Moments from Manor Lakes shopping precinct, within close proximity to Werribees favourite playground - Presidents Park. Dressed in contemporary flare, this three-bedroom home is away from Werribee/Wyndham Vales hustle and bustle; Whilst nearby local amenities and the public transport network.

**View :** <https://www.ypa.com.au/7362825>

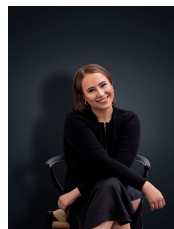
### Property Features:

Three generously sized bedrooms accompanied with double built in robes, master tailored with his/hers walk in robe & en suite

Open-plan kitchen/meals zone, overlooking light-filled family living

Central main bathroom w/ bath tub, along with separate laundry offering rear access

Single lock-up garage on remote tailored with rear &



**Ali Dowling**  
**0450 778 972**