



## 1A Focal Road WERRIBEE VIC

3 3 2

Nestled in the prestigious Riverwalk estate, this two-storey townhouse is steeped in modern and luxury flair. If you're looking for something chic yet contemporary, then this one's for you! Set in a location which assures tranquillity, offering close-proximity to Werribees CBD, Primary/Secondary schools, gorgeous parklands/walking tracks, along with convenient freeway access to both Melbourne and Geelong.

### Property Features:

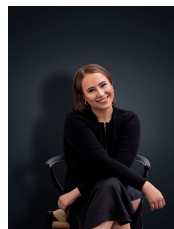
Three-bedroom floorplan paired with two spacious walk-in robes

Two character-filled en suites with extended showers, in conjunction with a main stylish bathroom fitted with bathtub

European laundry, alongside separate powder room

Light-filled kitchen & dining, overlooking formal lounge

**View :** <https://www.ypa.com.au/7362836>



**Ali Dowling**  
**0450 778 972**