



69 Inverell Parkway TARNEIT VIC

4 2 2

This wetland facing home offers a seamless indoor/outdoor living, quality fittings throughout and elegant contemporary decor create a superb family residence. This home offers instant appeal with alluring outdoor surroundings, all this is within moments of Tarneit station, shopping centres, local schools, parks and freeway access.

Property features include:

Four bedrooms, main bedroom with double door entry, stylish en-suite bathroom with toilet door and huge walk in robe

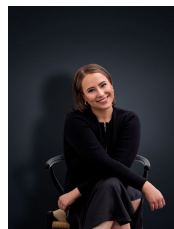
Childrens retreat between the three remaining bedrooms

Light filled open informal living incorporating central kitchen

Central main bathroom with separate toilet and laundry

Additional living zone with sliding doors opening to beautiful undercover alfresco

View : <https://www.ypa.com.au/7362861>



Ali Dowling
0450 778 972