

## 12 Parrakeet Road WERRIBEE VIC

4 2 1

Set in the heart of Werribee is this beautiful home which offers ample space for the whole family. Located only a short 1.6km (approx.) to Pacific Werribee Shopping Centre, 2.3km (approx.) to Werribee Train Station, 1.1km (approx.) to Heathdale Christian College and within close proximity to public transport, parklands, schools and sporting facilities, you'll be hard pressed to find a better location.

### Property features include:

- Four generously sized bedrooms, master with an en-suite and walk in robe

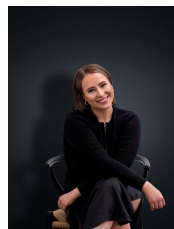
- Kitchen offers an abundance of bench and cupboard space

- Two separate living areas

- Centrally located bathroom

- Large pergola area with double gate entry from front of the home

**View :** <https://www.ypa.com.au/7362866>



**Ali Dowling**  
**0450 778 972**