



1 Julian Street WERRIBEE VIC

3 1 2

Positioned in the heart of Werribee and within close proximity to Werribee Train Station and Werribee CBD lays this beautifully presented home.

Property Features:

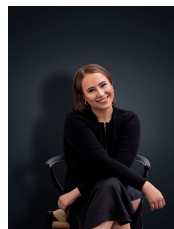
- Three generous sized bedrooms
- Renovated kitchen, fitting with modern cooking appliances
- Spacious formal lounge room, alongside separate dining zone
- Central bathroom, in addition to a double lock up garage with laundry facilities

Extra Features; Split system heating & cooling, beautiful polished floorboards, low maintenance grounds & gardens, along with a garden shed.

OUTSIDE OFFERS COSY BUNGALOW, INSPECT & YOU WILL NOT BE DISAPPOINTED!

(PHOTO ID REQUIRED AT OPEN FOR INSPECTION)

View : <https://www.ypa.com.au/7362868>



Ali Dowling
0450 778 972