

24 Merivale Drive TRUGANINA VIC

4 2 2

This impeccable family abode is an exemplary combination of space, elegance and style. This is the great opportunity to secure this stunning family home located 4 mins drive to Tarneit Train Station, Tarneit central Shopping Centre and within very close proximity to Wyndham Village shopping centre, Truganina P-9 college and Approximately 19 km from Melbourne's CBD.

Property features include:

Four spacious bedrooms including large master with walk in robe and en-suite

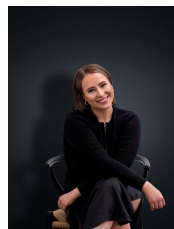
Multiple living areas including three downstairs, one upstairs and an additional study room

Open plan kitchen meals area with plenty of cupboard and bench space

Central main bathroom with separate toilet

Low maintenance gardens and outdoor entertainment area

View : <https://www.ypa.com.au/7362876>



Ali Dowling
0450 778 972