



60 Maple Crescent HOPPERS CROSSING VIC

4 2 2

Centrally located in the heart of Hoppers Crossing - Within walking distance to Bellbridge primary school, local shops and public transport.

Property features include;

Four bedrooms, all fitted with double built in robes Master with walk in robe

Central bathroom, along with separate en suite

Large formal lounge room upon entry

Open plan kitchen & meals area

Double lock up garage, with rear access

Private grassed backyard, with lots of room to play!

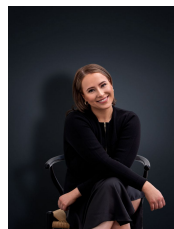
Other features include; Free-flowing floorplan, ducted heating, split system, dishwasher, low maintenance grounds.

Dont miss out, inspect today!!

(PHOTO ID REQUIRED AT OPEN FOR INSPECTION)

At YPA Estate Agents 'our service will move you'

View : <https://www.ypa.com.au/7362881>



Ali Dowling
0450 778 972