



34 Pascolo Way WYNDHAM VALE VIC

4 2 2

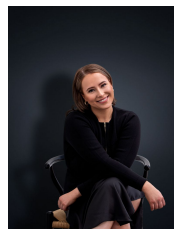
This brand-new house is ready to move into. Situated in the Jubilee Estate, which is surrounded by beautiful parklands and only a short drive to the local schools and shops.

View : <https://www.ypa.com.au/7362886>

Property Features include:

- Four bedrooms, Master bedroom with en-suite and walk-in robe
- Open plan living and dining area
- Kitchen with plenty of cupboard and bench space
- Additional living area
- Central main bathroom with separate toilet and laundry
- Alfresco and double remote-controlled garage

Extra features: ducted heating, evaporative cooling, study nook, walk in pantry, 5 burner gas stove top cooking, low maintenance gardens, Caesarstone bench, 900mm European made kitchen appliances, dishwasher, additional



Ali Dowling
0450 778 972