



56-58 Wattle Avenue WERRIBEE VIC

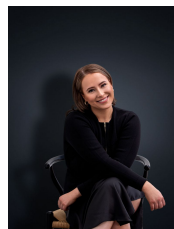
3 2 4

Set upon land of approximately 1 acre sits this beautiful heritage property, with the feel of a country home in the heart of Werribee. Situated on Watton Avenue you are within walking distance to the centre of Werribee, Watton Street shopping precinct, close to schools, transport and freeway access to Melbourne & Geelong.

Property features include:

- Three enormous bedrooms all with full en-suite bathrooms
- Formal lounge which features a large fireplace
- Kitchen/ meals area with plenty of bench and cupboard space
- Additional rumpus/ games room, and additional study room
- Central 4th bathroom with stylish claw foot bath
- Outside you have a double carport, great sized work shed

View : <https://www.ypa.com.au/7362898>



Ali Dowling
0450 778 972